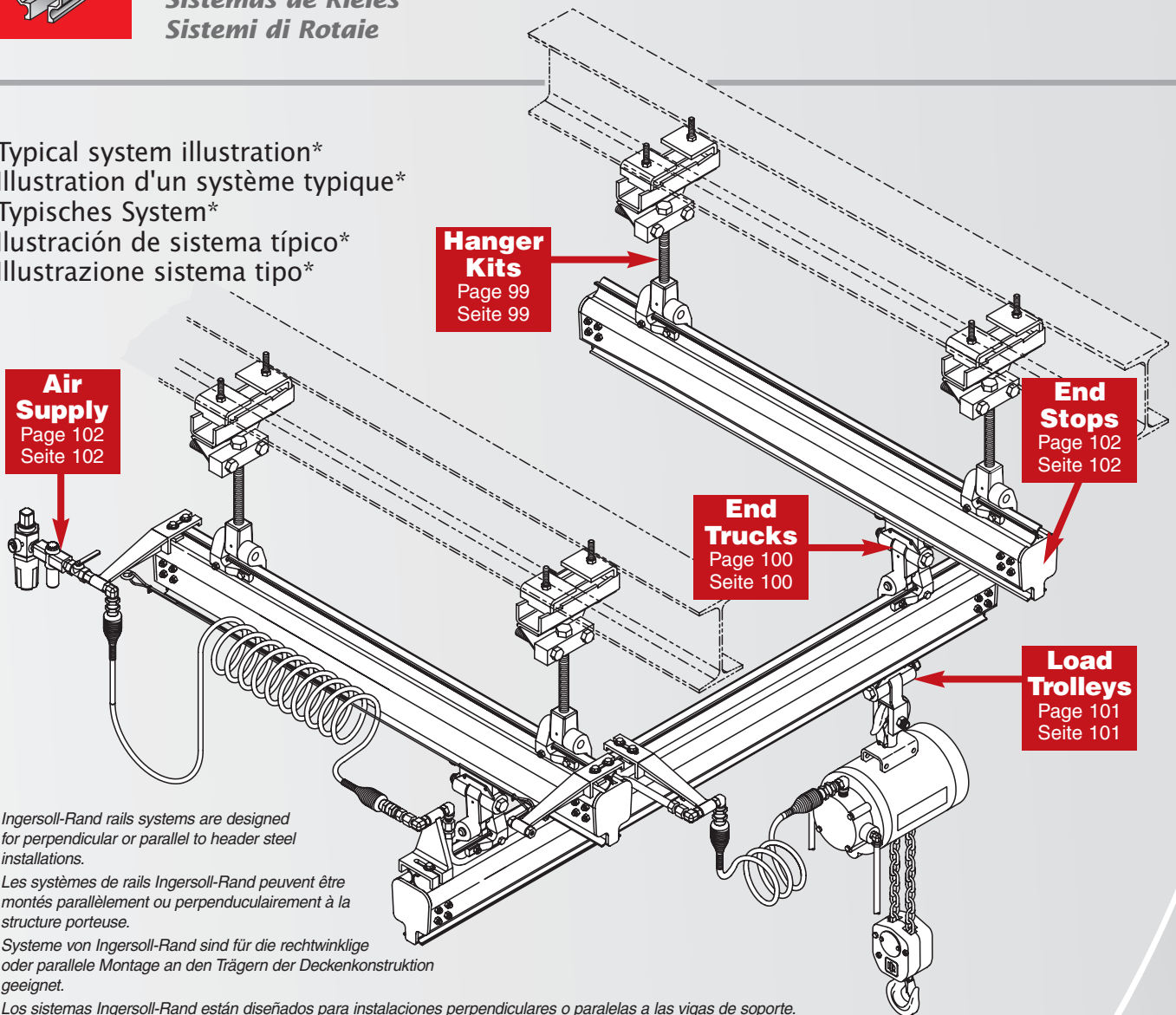


**Rail Systems**  
**Systèmes de Rails**  
**Laufschienensysteme**  
**Sistemas de Rieles**  
**Sistemi di Rotaie**

Typical system illustration\*  
 Illustration d'un système typique\*  
 Typisches System\*  
 Ilustración de sistema típico\*  
 Illustrazione sistema tipo\*



**Air Supply**  
 Page 102  
 Seite 102

**Hanger Kits**  
 Page 99  
 Seite 99

**End Stops**  
 Page 102  
 Seite 102

**End Trucks**  
 Page 100  
 Seite 100

**Load Trolleys**  
 Page 101  
 Seite 101

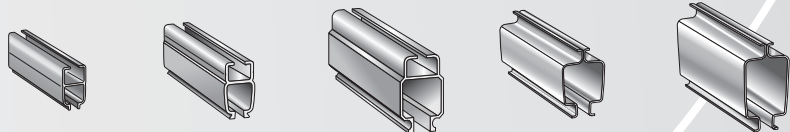
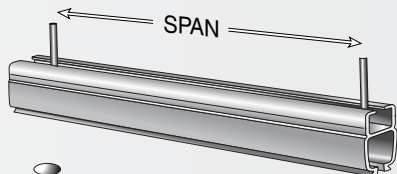
\* Ingersoll-Rand rails systems are designed for perpendicular or parallel to header steel installations.

\* Les systèmes de rails Ingersoll-Rand peuvent être montés parallèlement ou perpendiculairement à la structure porteuse.

\* Systeme von Ingersoll-Rand sind für die rechtwinklige oder parallele Montage an den Trägern der Deckenkonstruktion geeignet.

\* Los sistemas Ingersoll-Rand están diseñados para instalaciones perpendiculares o paralelas a las vigas de soporte.

\* Il sistema di rotaie Ingersoll-Rand può essere montato parallelamente e perpendicolarmente alle travi portanti.



**ZRAT**      **ZRA1**      **ZRA2**      **ZRS2**      **ZRS3**

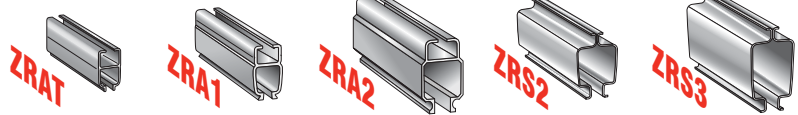
(kg) / ↔ 1 m.	
<b>Material :</b>	
Span (m) / load capacity (kg)	1 m
	1,5 m
	2 m
Portée (m) / capacité de charge (kg)	2,5 m
	3 m
	3,5 m
	4 m
Spannweite (m) / Traglast (kg)	4,5 m
	5 m
	5,5 m
Luz (m) / Capacidad de carga (kg)	6 m
	6,5 m
	7 m
Portata (m) / capacità (kg)	7,5 m
	8 m
	8,5 m

3.0kg	5.5 kg	11.3 kg	11.9 kg	13.2 kg
ALUMINIUM	ALUMINIUM	ALUMINIUM	STEEL	STEEL
372	734	1361	1293	1293
311	734	1361	1293	1293
175	595	1361	1293	1293
112	381	1361	1219	1293
78	264	1011	847	1293
57	194	742	622	1066
44	149	568	476	816
35	118	449	376	645
28	95	364	305	522
23	79	301	252	432
-	66	253	212	363
-	56	215	180	309
-	49	186	-	-
-	42	162	-	-
-	37	142	-	-
-	33	126	-	-

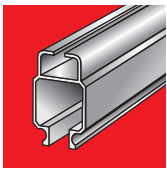
Hanger kits  
 Suspensions sous structure IPN, IPE, etc  
 Aufhängegesätze  
 Soportes de suspensión  
 Kits di sospensione su travi



For use with:  
 Pour utilisation avec:  
 In Verbindung mit:  
 Para uso con:  
 Per utilizzo con:



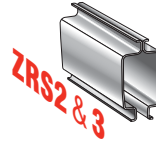
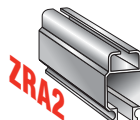
ADJUSTABLE (± 22 mm) AJUSTABLE (± 22 mm) EINSTELLBAR (± 22 mm) AJUSTABLE (± 22 mm) REGOLABILE (± 22 mm)			H = 287 mm 30287-006	H = 287 mm 30287-006	H = 295 mm 30195-006	H = 273 mm 30814-006	H = 273 mm 30814-006
			H = 439 mm 30287-012	H = 439 mm 30287-012	H = 447 mm 30195-012	H = 425 mm 30814-012	H = 425 mm 30814-012
			H = 287 mm 30288-006	H = 287 mm 30288-006	H = 295 mm 30196-006	H = 273 mm 30815-006	H = 273 mm 30815-006
			H = 439 mm 30288-012	H = 439 mm 30288-012	H = 447 mm 30196-012	H = 425 mm 30815-012	H = 425 mm 30815-012
SHORT COURTE KURZ CORTO CORTO			H = 156 mm 30300	H = 156 mm 30300	H = 164 mm 30921	H = 142 mm 30840	H = 142 mm 30840
			H = 156 mm 30301	H = 156 mm 30301	H = 164 mm 30922	H = 142 mm 30841	H = 142 mm 30841
PARALLEL BEAM FER PORTEUR PARALLELE PARALLELE ZUM TRÄGER VIGA PARALLELA TRAVE PARALLELA			H = 292 mm 30290	H = 292 mm 30290	H = 301 mm 30199	H = 279 mm 30817	H = 279 mm 30817
			H = 292 mm 30291	H = 292 mm 30291	H = 301 mm 30900	H = 279 mm 30818	H = 279 mm 30818
		Block mount	H = 244 mm 30289	H = 244 mm 30289	H = 253 mm 30198	H = 231 mm 30816	H = 231 mm 30816
PERPENDICULAR BEAM FER PORTEUR PERPENDICULAIRE RECHTWINKLIG ZUM TRÄGER VIGA PERPENDICULAR TRAVE PERPENDICOLARE			H = 292 mm 30292	H = 292 mm 30292	H = 301 mm 30901	H = 279 mm 30819	H = 279 mm 30819
			H = 292 mm 30293	H = 292 mm 30293	H = 301 mm 30902	H = 279 mm 30820	H = 279 mm 30820
		Block mount	H = 244 mm 30285	H = 244 mm 30285	H = 253 mm 30193	H = 231 mm 30813	H = 231 mm 30813
RIGID RIGIDE STARR RIGIDA RIGIDO		Rigid mount	30227	30227	30052		



**Rail Systems (continued)**  
**Systèmes de Rails (suite)**  
**Laufschienensysteme (Fortsetzung)**  
**Sistemas de Rieles (continuación)**  
**Sistemi di Rotaie (seguito)**



End trucks  
 Chariots supports de poutres mobiles  
 Brückenfahrwagen  
 Suspensiones del puente  
 Sospensioni per ponte mobile

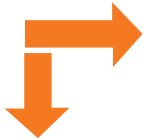
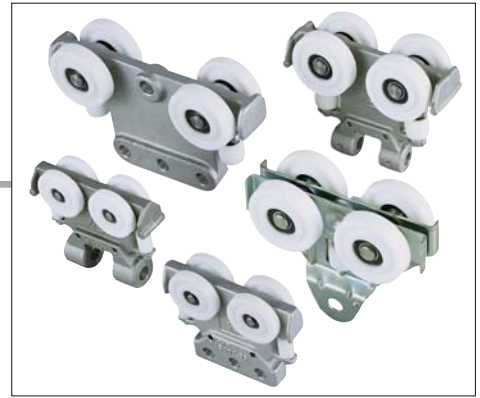


**KBK1**

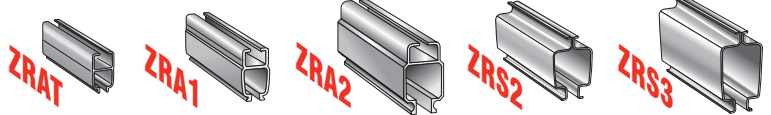
**KBK2  
& KBK2L**

 <b>ZRAT</b>	SWL  227 kg Ref. 31059	SWL  227 kg Ref. 30283	SWL  454 kg Ref. 30909	SWL  454 kg Ref. 30822	SWL  227 kg Ref. 30283	SWL  454 kg Ref. 30639
 <b>ZRA1</b>	SWL  454 kg Ref. 31060	SWL  454 kg Ref. 30286	SWL  908 kg Ref. 30911	SWL  908 kg Ref. 30826	SWL  454 kg Ref. 30286	SWL  908 kg Ref. 30846
 <b>ZRA2</b>	SWL  227 kg Ref. 31059	SWL  227 kg Ref. 30283	SWL  454 kg Ref. 30909	SWL  454 kg Ref. 30822	SWL  227 kg Ref. 30283	SWL  454 kg Ref. 30639
 <b>ZRS2 ZRS3</b>	—	SWL  227 kg Ref. 30295	SWL  454 kg Ref. 30176	SWL  454 kg Ref. 30824	SWL  227 kg Ref. 30295	SWL  454 kg Ref. 30927
 <b>KBK1</b>	SWL  454 kg Ref. 31060	SWL  454 kg Ref. 30286	SWL  908 kg Ref. 30911	SWL  908 kg Ref. 30826	SWL  454 kg Ref. 30286	SWL  908 kg Ref. 30846
 <b>KBK2 &amp; KBK2L</b>	SWL  454 kg Ref. 31060	SWL  454 kg Ref. 30286	SWL  908 kg Ref. 30911	SWL  908 kg Ref. 30826	SWL  454 kg Ref. 30286	SWL  908 kg Ref. 30846
 <b>KBK1</b>	—	SWL  227 kg Ref. 30272	SWL  454 kg Ref. 30177	SWL  454 kg Ref. 30828	SWL  227 kg Ref. 30295	SWL  454 kg Ref. 30927
 <b>KBK2 &amp; KBK2L</b>	—	SWL  454 kg Ref. 30272	SWL  908 kg Ref. 30177	SWL  908 kg Ref. 30828	SWL  454 kg Ref. 30272	SWL  908 kg Ref. 30643
 <b>KBK1</b>	—	SWL  227 kg Ref. 30320	SWL  454 kg Ref. 30913	SWL  454 kg Ref. 30597	SWL  227 kg Ref. 30320	SWL  454 kg Ref. 30563
 <b>KBK2 &amp; KBK2L</b>	—	SWL  454 kg Ref. 30298	SWL  908 kg Ref. 30915	SWL  908 kg Ref. 30599	SWL  454 kg Ref. 30298	—

Load trolleys  
 Chariots de translation sous poutres mobiles  
 Laufwagen für Profilschienen  
 Carro de traslación  
 Carrelli di traslazione



For use with :  
 Pour utilisation avec :  
 In Verbindung mit :  
 Para uso con :  
 Per utilizzo con :



Simple trolley Chariot simple Einfacher Laufwagen Carro sencillo Carrello semplice		SWL 227 kg Ref. 31057	SWL 227 kg Ref. 30281	SWL 454 kg Ref. 30172	SWL 454 kg Ref. 30821	SWL 454 kg Ref. 30821
Load trolley (with suspension axle) Chariot avec axe de suspension Lastenlaufwagen Carro de carga Carrello di sospensione (con asse di sosp.)		—	SWL 227 kg Ref. 30304	SWL 454 kg Ref. 30923	SWL 454 kg Ref. 30842	SWL 454 kg Ref. 30842
Hoist trolley Chariot porte-palan Laufwagen für Hebezeuge Carro de polipasto Carrello porta paranco		SWL 227 kg Ref. 31313	SWL 227 kg Ref. 30313	SWL 454 kg Ref. 30314	SWL 454 kg Ref. 30315	SWL 454 kg Ref. 30315
Dual hoist trolley Chariots jumelés porte-palan Doppelter Laufwagen für Hebezeuge Carro doble de polipasto Doppio carrello porta paranco		—	SWL 454 kg Ref. 30303	SWL 908 kg Ref. 30906	SWL 908 kg Ref. 30830	SWL 908 kg Ref. 30830
3 hole trolley Chariot large 3-Loch-Laufwagen Carro de 3 agujeros Carrello largo		SWL 227 kg Ref. 31056	SWL 227 kg Ref. 30279	SWL 454 kg Ref. 30015	SWL 454 kg Ref. 30510	SWL 454 kg Ref. 30510
Reaction trolley (for cantilevered loads) Chariot 3 roues (pour portes-à-faux) Reaktionslaufwagen (für vortragende Lasten) Carro de reacción (para cargas descentradas) Carrello di reazione (per travi a sbalzo)		—	—	SWL 454 kg Ref. 30016	SWL 454 kg Ref. 30511	—
Bumper trolley Chariot de butée Anschlaglaufwagen Carro paragolpes Carrello respingente	 Ref. XXXXX-1200, L = 305 mm Ref. XXXXX-2400, L = 610 mm Ref. XXXXX-3600, L = 915 mm Ref. XXXXX-4800, L = 1220 mm	—	30307-1200 30307-2400 30307-3600 30307-4800	30148-1200 30148-2400 30148-3600 30148-4800	30148-1200 30148-2400 30148-3600 30148-4800	30148-1200 30148-2400 30148-3600 30148-4800

Curved rails for ZRA1 monorail installations  
 Rails courbes pour installations monorails ZRA1  
 Gebogene Schienen für ZRA1 Monoschiene-  
 Installationen  
 Railes curvos para instalaciones monorail ZRA1  
 Travi curve per installazione monorotaie ZRA1



	Ref.
914 mm 15°	30254
914 mm 30°	30255
914 mm 45°	30256
914 mm 60°	30257
914 mm 90°	30258

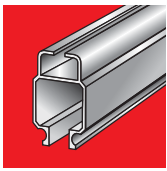
**Note :** The ZRA1 monorails use the same components as the ZRA1 bridge cranes (hanger kits, load trolleys, etc), except dual hoist trolley, ref. 30303.

**Nota :** Les configurations monorails ZRA1 utilisent les mêmes composants que les poutres mobiles ZRA1 (suspensions, chariots de charge, etc), sauf chariot jumelé porte-palan, réf. 30303.

**Anmerkung:** Mit ZRA1 Monoschiene werden die gleichen Komponenten wie mit ZRA1-Brücken verwendet (Aufhängungen, Laufwagen etc.) außer Doppelter Laufwagen für Hebezeuge, Ref. 30303.

**Nota :** los monorails ZRA1 usan los mismos componentes que la viga puente ZRA1 (Kit de suspensión de carros de carga, etc) excepto el carro doble de polipasto, ref. 30303.

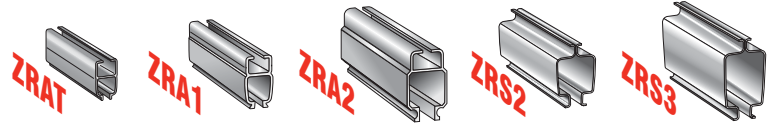
**Nota :** La configurazione monorotaie ZRA1 utilizza gli stessi componenti dei carri ponti ZRA1 (sospensioni, carrelli di carico, etc...) ad eccezione del doppio carrello per paranco, rif. 30303.



**Rail Systems (continued)**  
**Systèmes de Rails (suite)**  
**Laufschienensysteme (Fortsetzung)**  
**Sistemas de Rieles (continuación)**  
**Sistemi di Rotaie (seguito)**

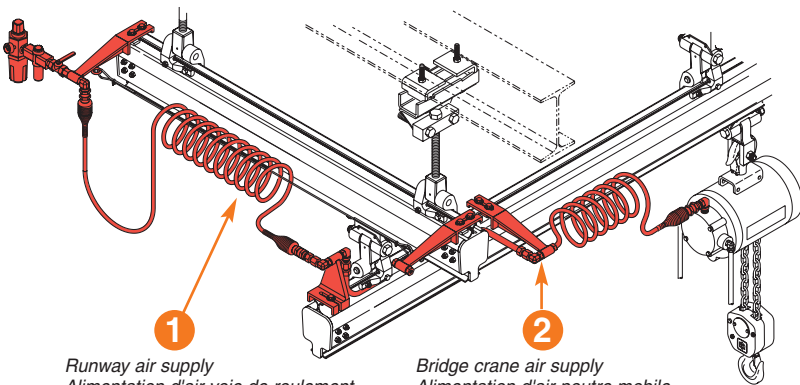


End stops and splice bolt kit  
 Butées et raccordements de rails  
 Endanschläge und Verbindungssätze  
 Tope final y uniones  
 Fine corsa e raccordi per rotaie



End stop Butée de fin de rail Endanschlag Tope final Fine corsa per rotaie		Ref. 31022	Ref. 30275	Ref. 30183	Ref. 30804	Ref. 30808
Redundent Butée additionnelle (redondante) Zusätzlicher Anschlag Redundante Respingente		Ref. 31024	Ref. 30277	Ref. 30185	Ref. 30806	Ref. 30810
Adjustable end stop Butée réglable Einstellbarer Anschlag Tope final ajustable Fine corsa e respingente regolabile		Ref. 30738	Ref. 30738	Ref. 30733	Ref. 30733	Ref. 30733
Splice bolt kit Kit de raccordement Verbindungssatz Uniones Kit di raccordo		Ref. 31020	Ref. 30231	Ref. 30057	Ref. 30515	Ref. 30515

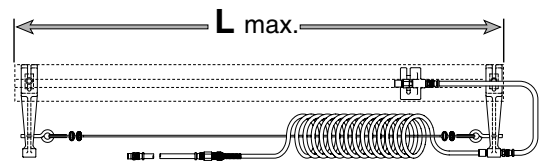
Air supply  
 Alimentations d'air  
 Luftversorgungssätze  
 Suministro de aire  
 Alimentazione aria



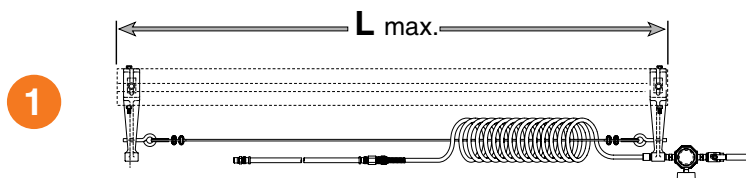
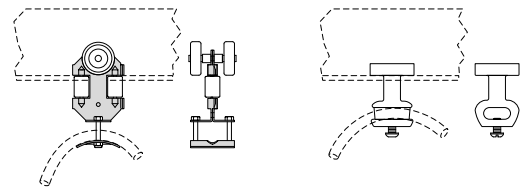
1  
 Runway air supply  
 Alimentation d'air voie de roulement  
 Luftversorgungssatz Laufschiene  
 Suministro de aire de viga carril  
 Alimentazione aria piano rotaia

2  
 Bridge crane air supply  
 Alimentation d'air poutre mobile  
 Luftversorgungssatz Brücke  
 Suministro de aire de viga puente  
 Alimentazione aria carro ponte

2

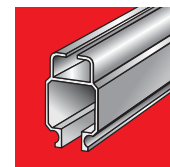


Ø 3/8"	Ref.	Ø 1/2"	Ref.
L = 9 m	90025	L = 9 m	90026

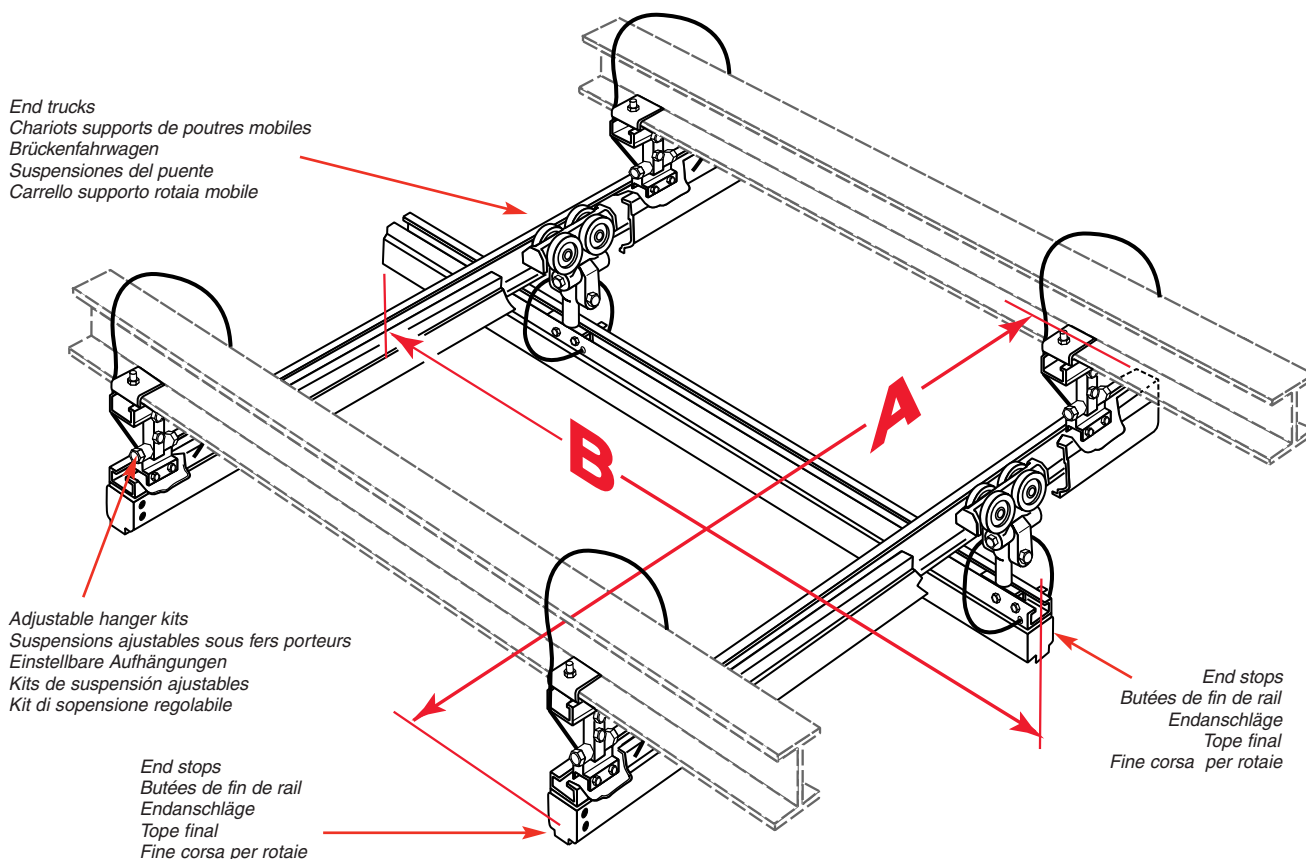


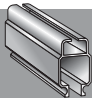



Ø 3/8"	Ref.	Ø 1/2"	Ref.
L = 15 m	90000-1	L = 15 m	90001-1
L = 22.5 m	90000-2	L = 22.5 m	90001-2
L = 30 m	90000-3	L = 30 m	90001-3
L = 37.5 m	90000-4	L = 37.5 m	90001-4
L = 45 m	90000-5	L = 45 m	90001-5

	ZRAT	ZRA1	ZRA2 ZRS2 ZRS3
Festoon trolley Chariot porte-guirlande Girlandenwagen Carro portamangueras Carrelli portacavo	31005 + 31011	30579	30581
Slider Glisseur porte-guirlande Girlandengleiter Deslizador Cursore	99048	99048	99049



Rail packages for both perpendicular and parallel installations  
 Kits de rails pour installation perpendiculaire ou parallèle à la structure porteuse  
 Schienensystempakete für parallele und rechtwinklige Installation  
 Conjuntos de rail para instalaciones perpendiculares y paralelas  
 Kit rotaie per installazione perpendicolare e parallela a strutture portanti



Ref.		A 	B 	SWL 
SR30A1B30SA1C220	ZRA1	3 m	3 m	220 Kg
SR40A1B30SA1C220	ZRA1	4 m	3 m	220 Kg
SR40A1B40SA1C180	ZRA1	4 m	4 m	180 Kg
SR50A1B30SA1C220	ZRA1	5 m	3 m	220 Kg
SR50A1B40SA1C180	ZRA1	5 m	4 m	180 Kg
SR50A1B50SA1C110	ZRA1	5 m	5 m	110 Kg
SR60A1B30SA1C220	ZRA1	6 m	3 m	220 Kg
SR60A1B40SA1C180	ZRA1	6 m	4 m	180 Kg
SR60A1B50SA1C110	ZRA1	6 m	5 m	110 Kg
SR50A2B30SA2C450	ZRA2	5 m	3 m	450 kg
SR50A2B40SA2C450	ZRA2	5 m	4 m	450 Kg
SR60A2B30SA2C450	ZRA2	6 m	3 m	450 Kg
SR60A2B40SA2C450	ZRA2	6 m	4 m	450 Kg
SR60A2B50SA2C450	ZRA2	6 m	5 m	450 Kg
SR60A2B60SA2C300	ZRA2	6 m	6 m	300 Kg
SR90A2B30SA2C450	ZRA2	9 m	3 m	450 Kg
SR90A2B40SA2C450	ZRA2	9 m	4 m	450 Kg
SR90A2B60SA2C300	ZRA2	9 m	6 m	300 Kg